

Customer :

customer

Customer part :

customer part

Comment :

Comment

S1=0.65

S2=11.96

Tmax=442

Tp S2=481.0

PI=0.05

HI=237

Sample =9107

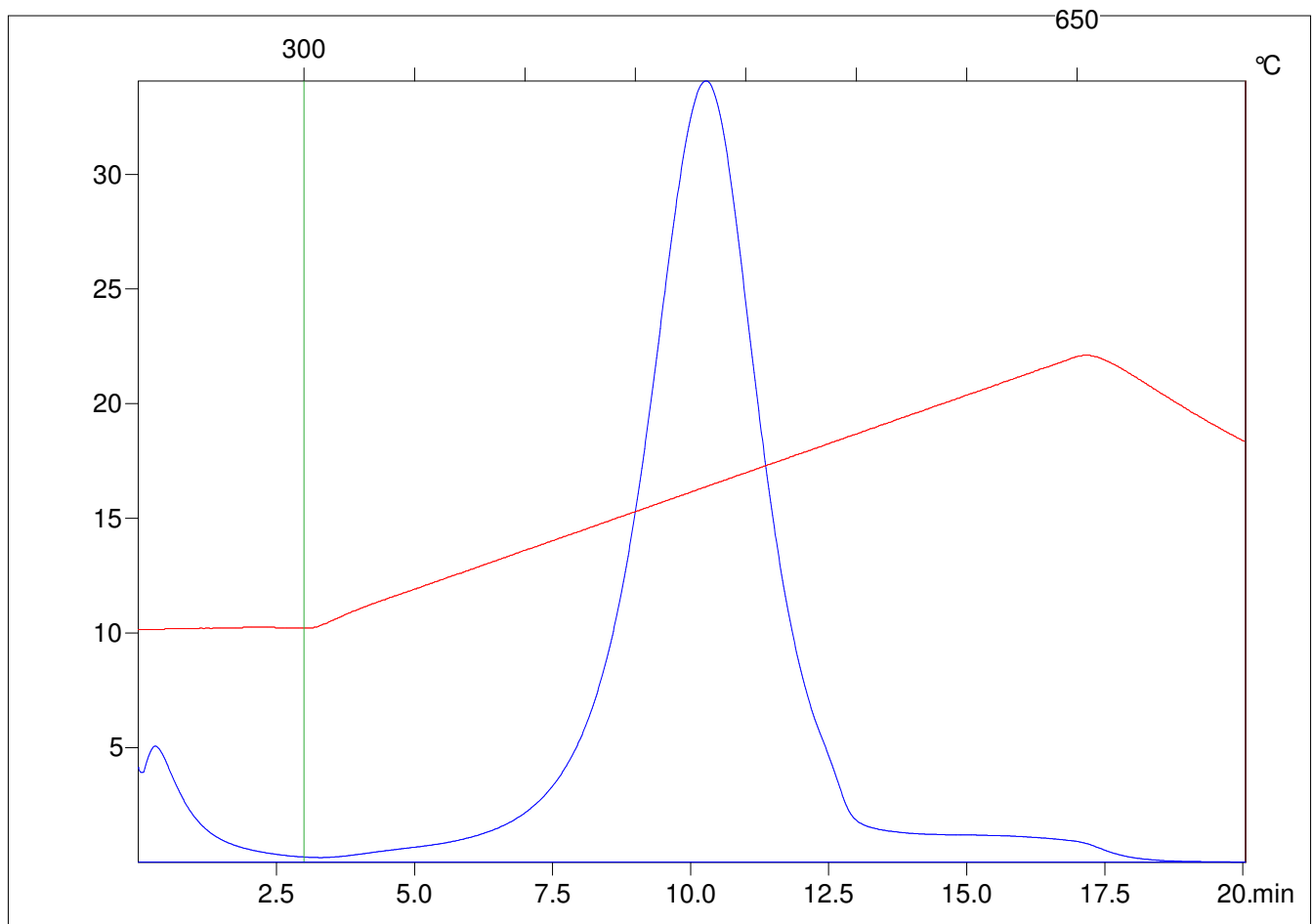
Method =Bulk Rock

Cycle=Basic

KFID(10*9)=1444

Qty =70.3

TOC=5.05



C:\VINC\PK4_1792\PK026.R00 : FID pyrolysis graphic

State

Pyro Status

Oxi Status